

# Trout Unlimited Bitterroot Projects

Bitterroot Stakeholder Meeting, February 28, 2022

Christine Brissette

Bitterroot Project Manager, Trout Unlimited



# Protect - Reconnect - Restore



# Lee Metcalf Reconnect Project



# Lee Metcalf Reconnect Project



## Goals:

- Improve 0.5 miles of instream & riparian habitat on the Refuge
- Remove barrier & Reconnect 3.5 miles of lower Burnt Fork to the Bitterroot River
- Maintain visitor access
- Engage the public in design, decision-making and education
- Reduce maintenance

- Fall 2021-Winter 2022: Survey and Design Alternatives
- Spring 2022: Stakeholder Engagement. Design Selection.

# Skalkaho Creek Fish Screens



- Fall/Winter 2021: Survey and Design Alternatives
- 2022: Final Design & Fundraising
- Fall 2023-2024: Construction

Goal:

Upgrade/replace 3 existing fish screens to eliminate entrainment

- Unique migratory westslope cutthroat population
- Unscreened, ditches capture 50-80% of outmigrating fish
- Existing screens 20 years old



# Bitterroot Dewatering Inventory



Verizon 11:27 AM

Bitterroot Dewatering Inventory

Stream name \*

This survey response can also be saved as a favorite to be pasted for future submissions.

Location \*

Tap the crosshairs icon to record your current location. For potentially improved accuracy tap and hold crosshairs icon, wait several seconds, and tap the crosshairs icon again to stop averaging locations.

46°51'N 113°60'W ± 30 m

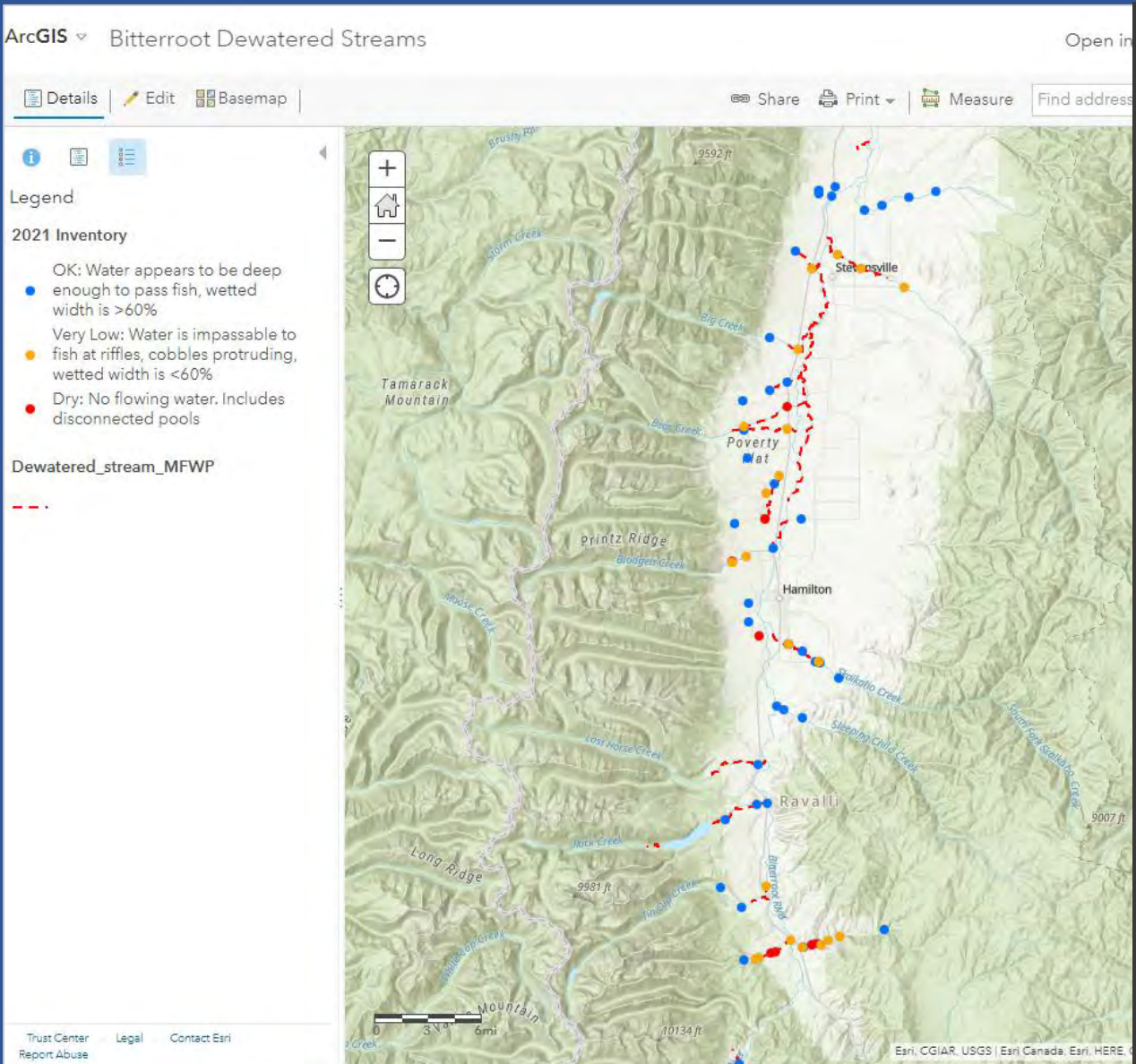
Streamflow rating \*

- Dry: No flowing water. Includes disconnected pools
- Very Low: Water is impassable to fish at riffles, cobbles protruding, wetted width is <60%
- OK: Water appears to be deep enough to pass fish, wetted width is >60%

✓

Blodgett Creek: August 21, 2021

# Bitterroot Dewatering Inventory



• 73 Sites

• 27 Creeks

### Results:

- More water than expected! Timing?
- 6 Dry Creeks (Creeks (Chaffin, Rye, Roaring Lion, Blodgett, Mill and North Bear)
- 3 New dry sections: Rye, Roaring Lion & Blodgett
- 13 "At Risk" Creeks (Dry or Very Low)

### Next Steps:

- Feedback on where to inventory in future efforts