



BITTER ROOT
Water
Forum

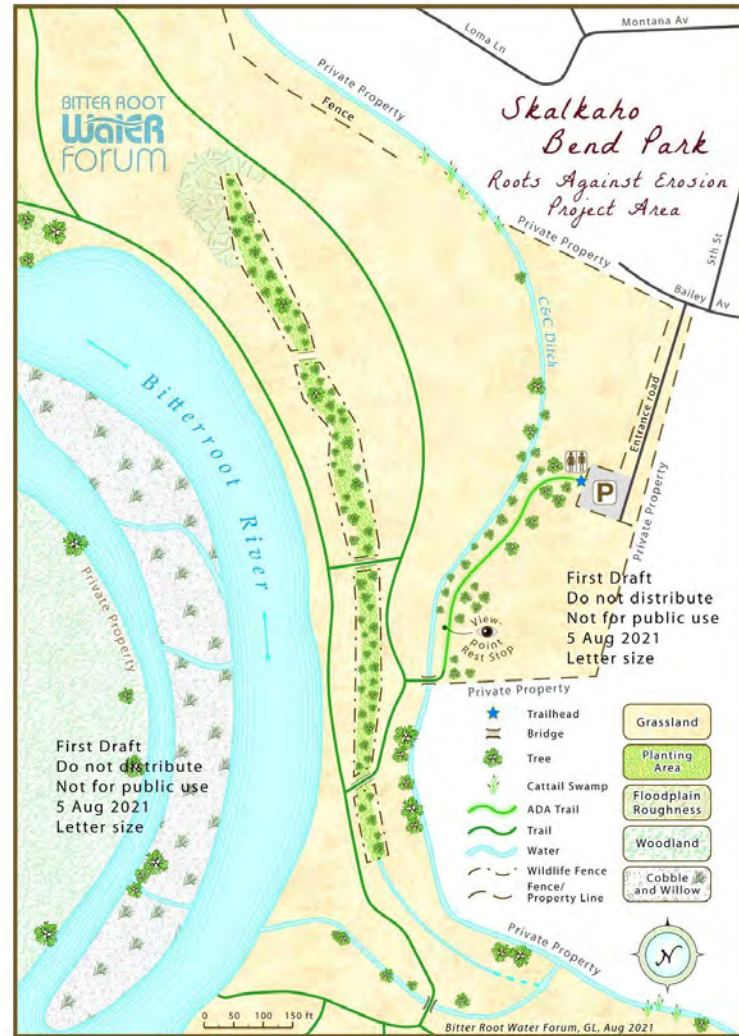
Water Quality Projects

Since last time...

- Sediment, nutrient and temperature reduction through riparian revegetation and grazing BMPs
- 200+ volunteers installed over 11,000 native plants on public and private lands



Skalkaho Bend



John Owen Fishing Access Site Revegetation



Burnt Fork Ranch Restoration



Upcoming Projects (15)

- Reveg at 7 Fishing Accesses throughout region 2
- 4 projects on working lands (Threemile, Willow, East Fork): bank treatments and grazing BMPs
- Westslope Cutthroat passage and road BMPs on public land

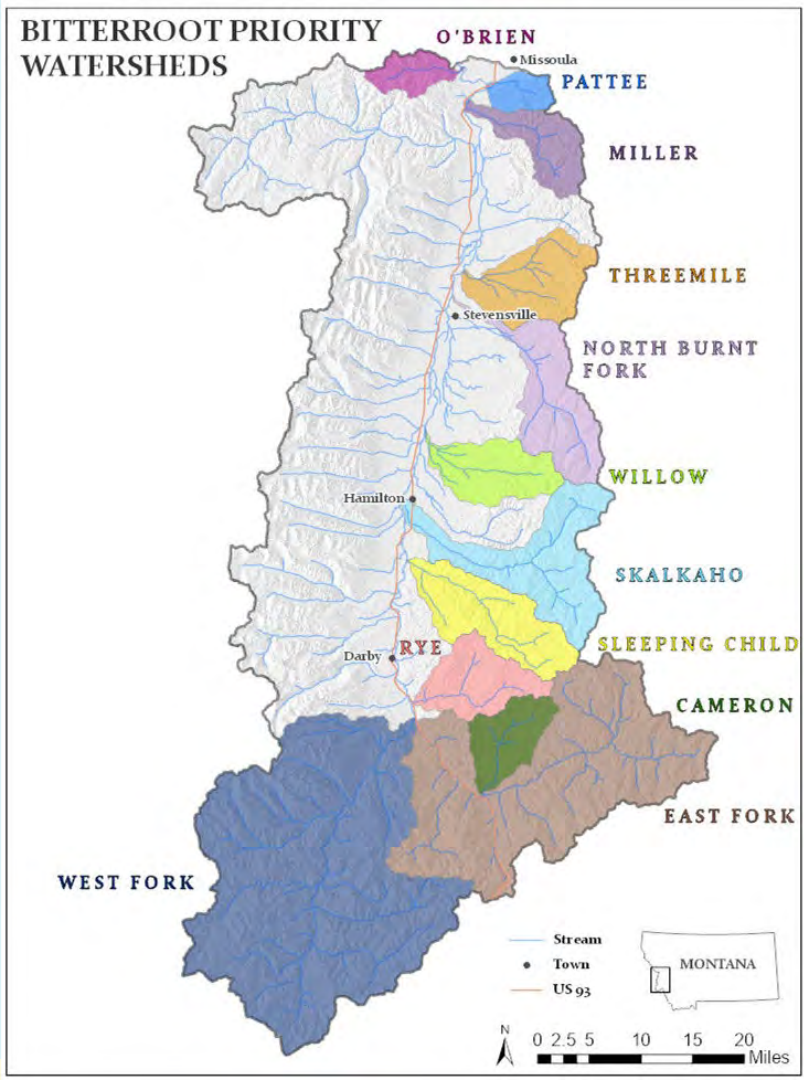


Revegetate the Valley

Private lands on priority streams

Eligible Practices:

- Riparian fencing
- Revegetation
- Off-stream watering
- Reinforced livestock crossings
- Other grazing BMPs



Beaver Restoration



Thank you to our water quality partners!

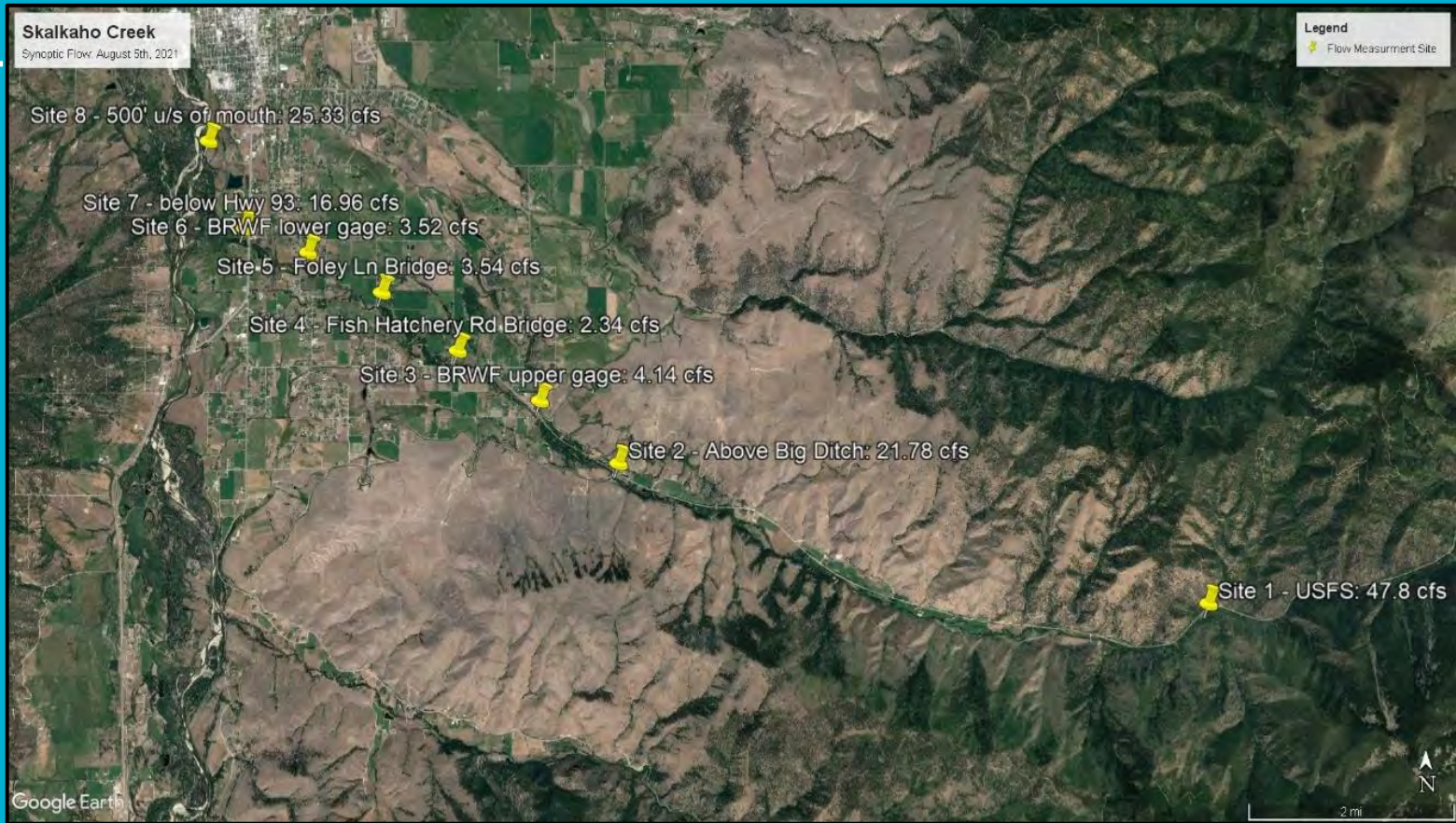
- Funders DEQ, Bitterroot Conservation District, Resource Advisory Council, Future Fisheries, Montana Watershed Coordination Council, and Bitterroot Audubon
- Project partners FWP, Ravalli County Roads Department, City of Hamilton, private landowners, and volunteers

Water Conservation Program

Background

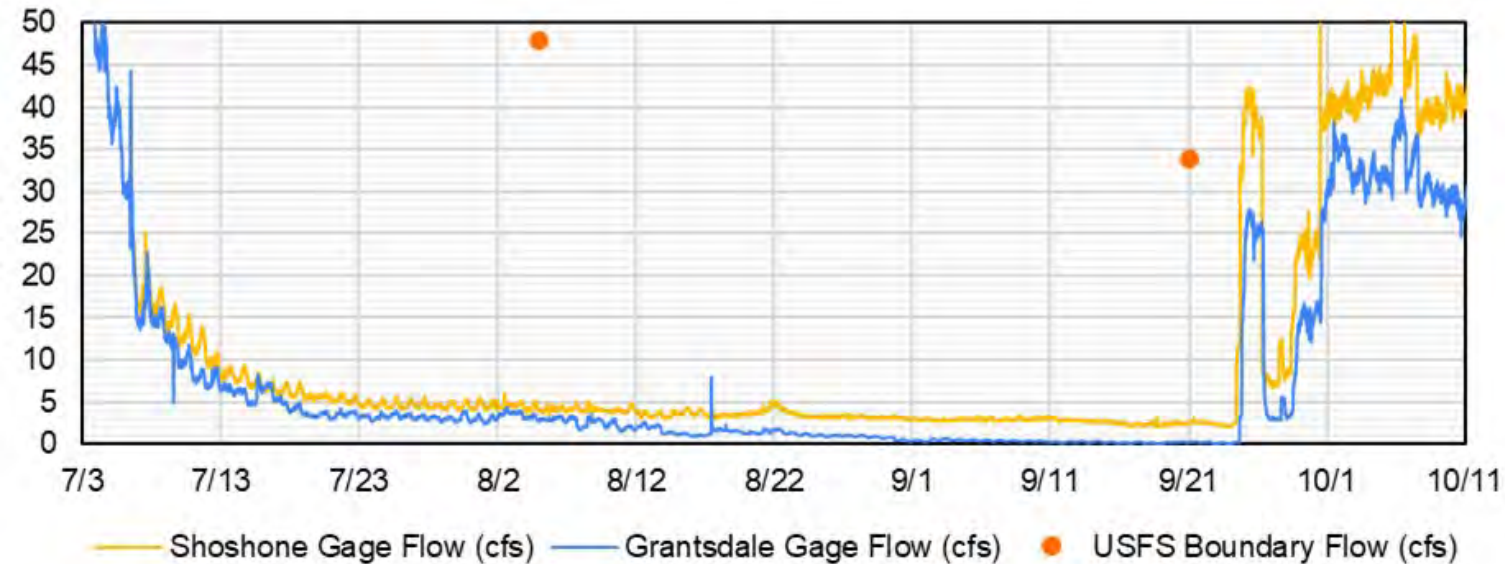
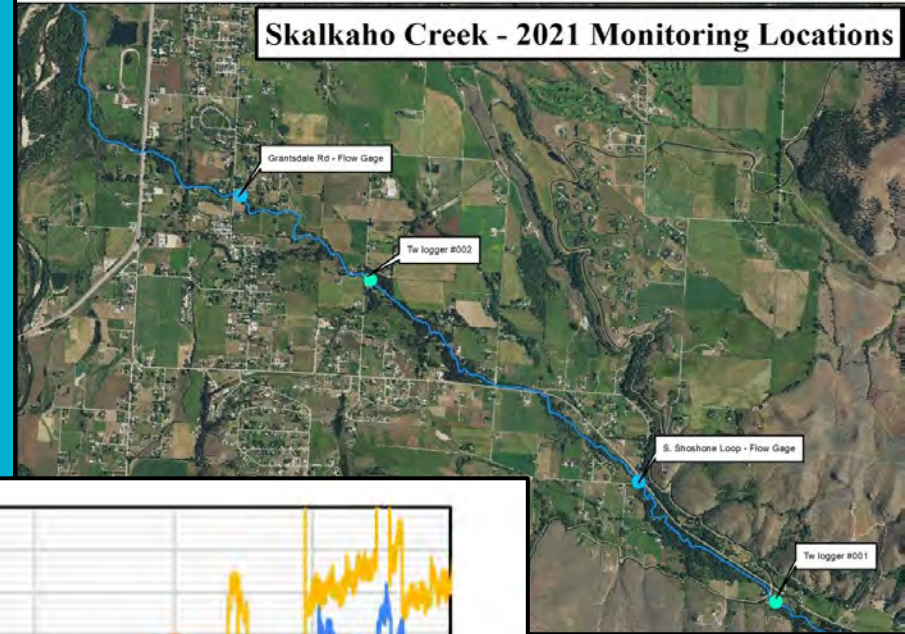
- Reclamation Watersmart grant and partnership with TU
- Exploring...
 - Reservoir storage
 - Aquifer recharge
 - Natural storage
 - Irrigation efficiency
 - Ditch infrastructure upgrades
 - Big Ditch study

Skalkaho Creek Monitoring



Skalkaho Creek: Flows

Skalkaho Creek - 2021 Monitoring Locations

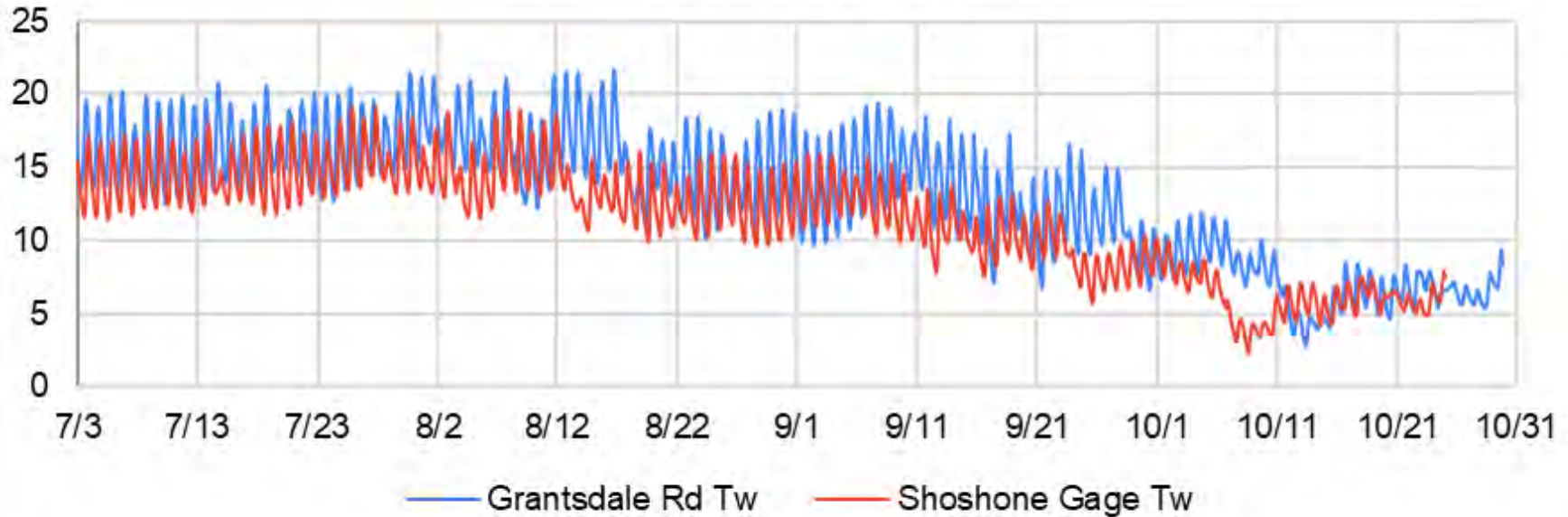


Skalkaho Creek: Flows



Skalkaho Creek: Temperatures

Water Temperature



A River Conditions Tool for Drought Resiliency

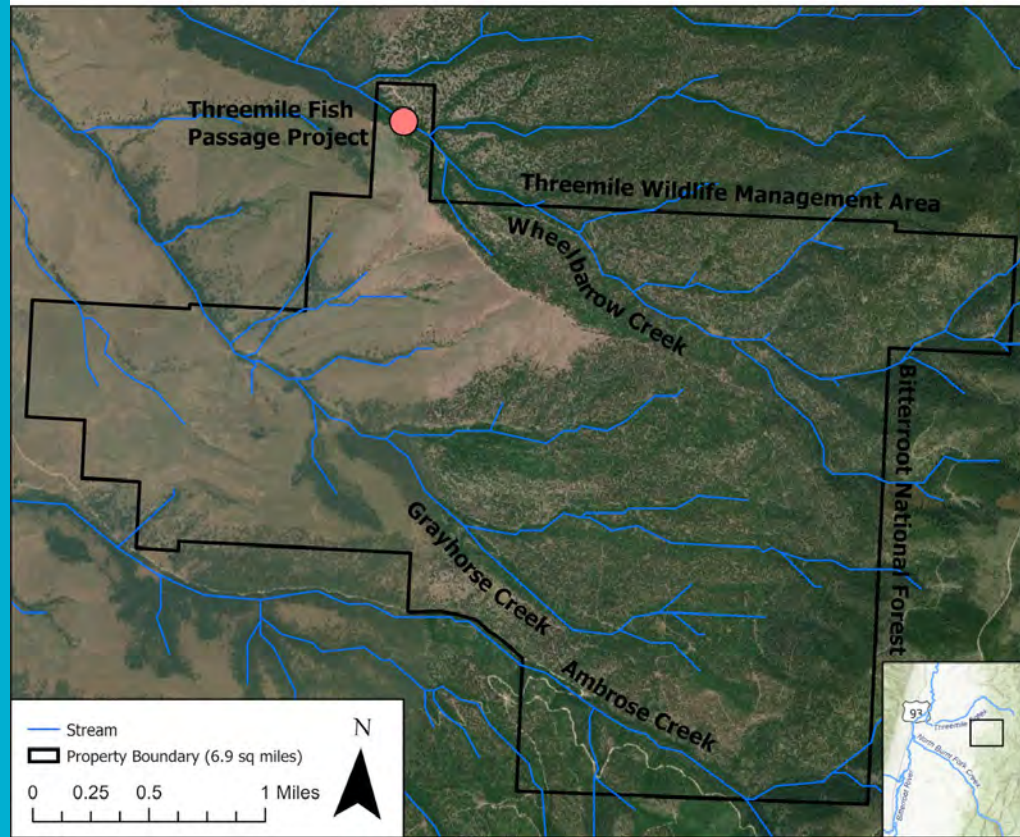
Matt Heller, USFWS and Melissa Widas, MSU

Questions?

Threemile Fish Passage

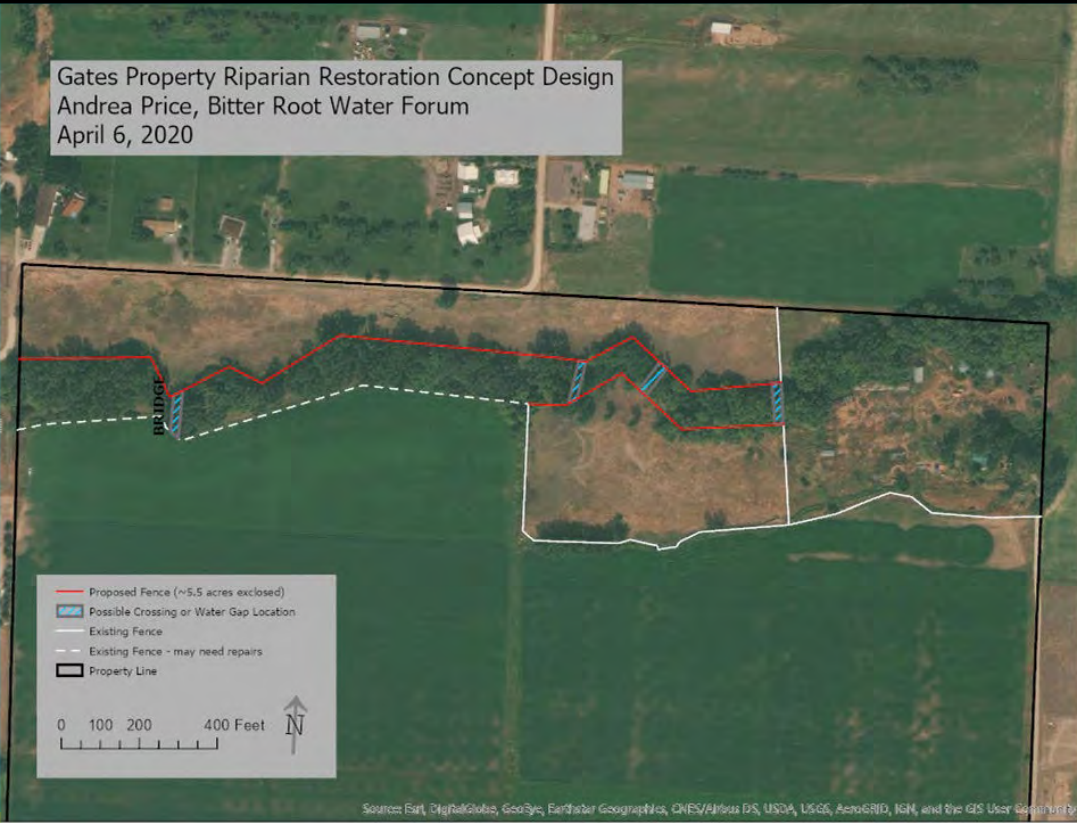


Planning on Threemile Headwaters Ranch

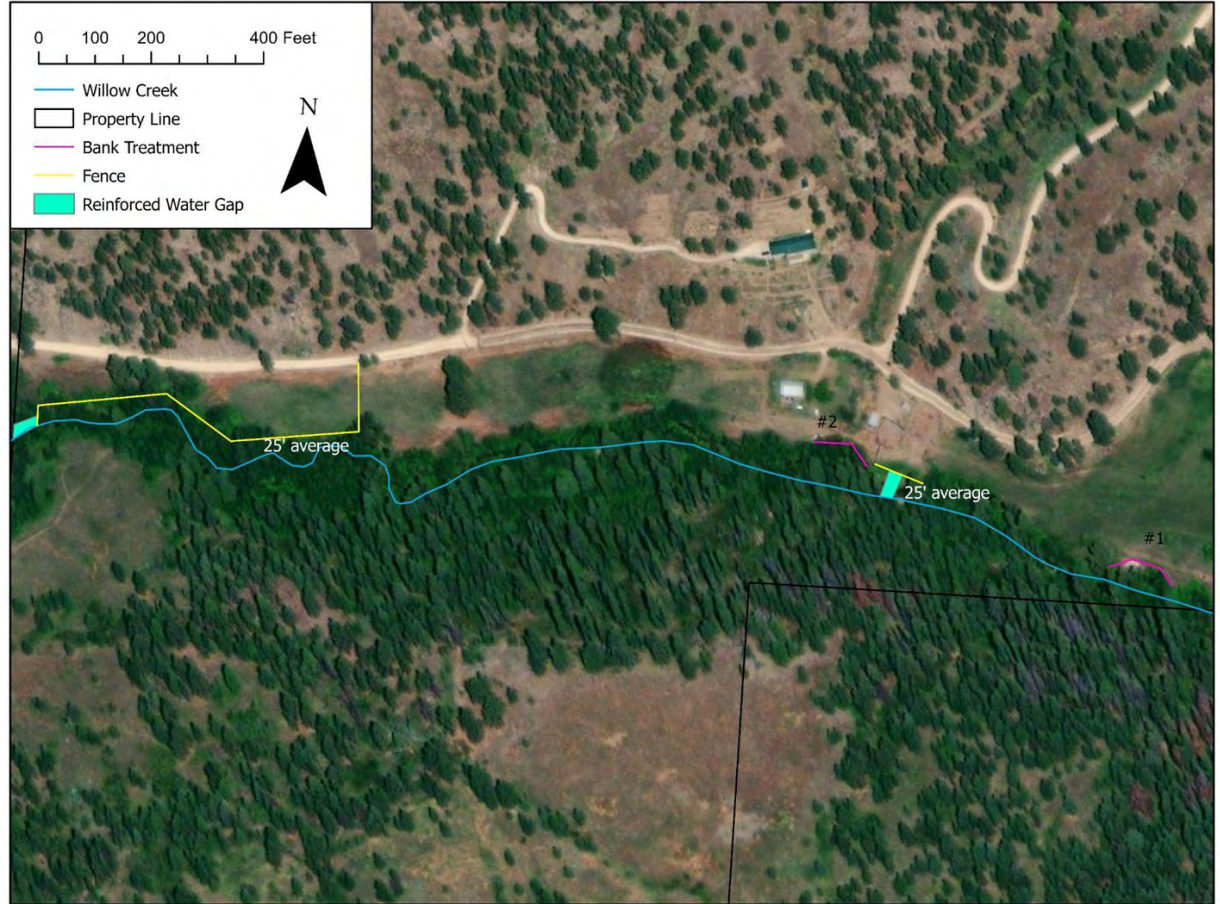


Grazing Management on Threemile Creek

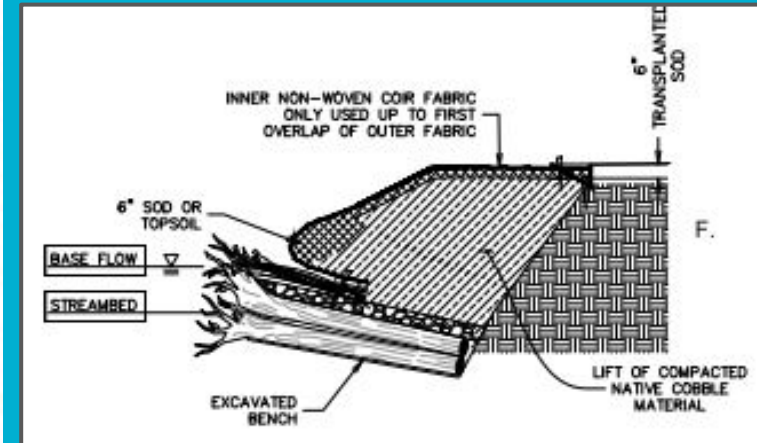
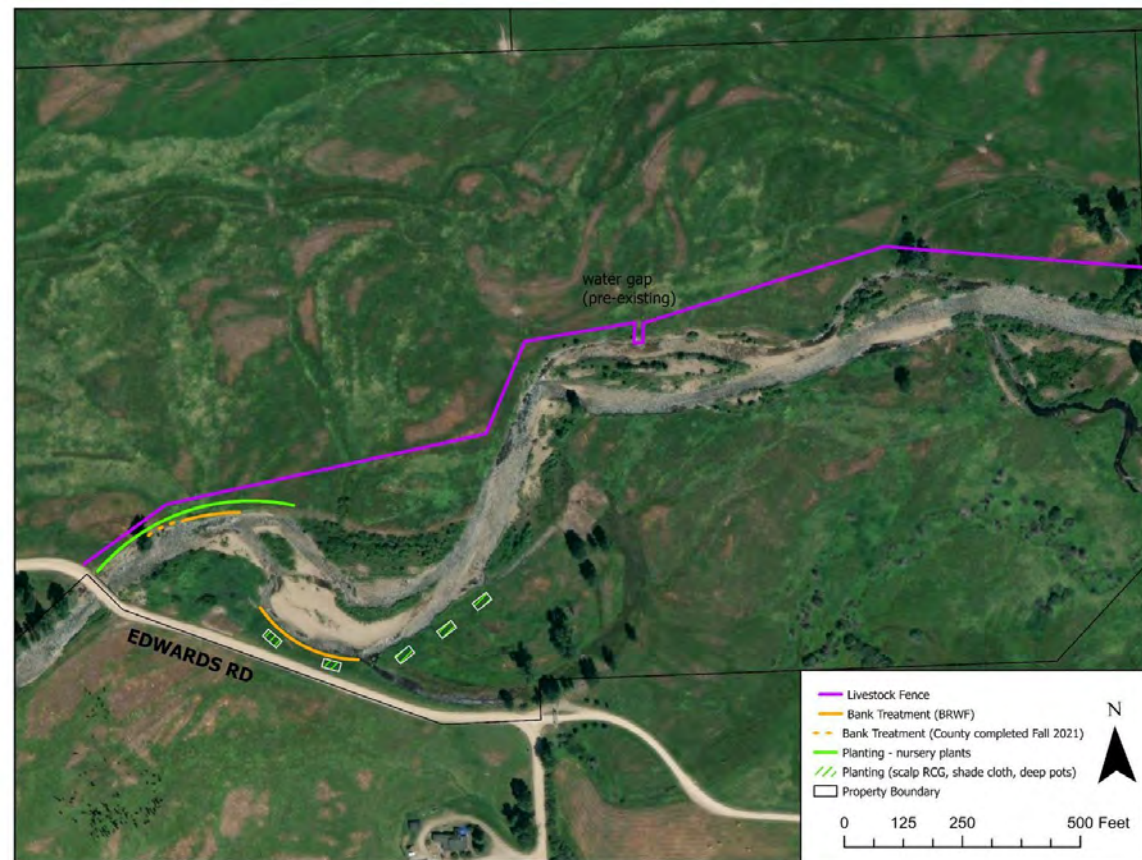
Gates Property Riparian Restoration Concept Design
Andrea Price, Bitter Root Water Forum
April 6, 2020



Willow Creek



East Fork at Edwards Road (Sula)



FAS Reveg

- 7 sites in Region 2
- 2,500' of stream restored
- 1000+ plants

